



A handwritten signature in black ink that reads "Joyce" in a cursive style.

Lecture Topics

- Cosmetic Simple to Complex
- Occlusion, Bite & Function
- Digital Design/Technology
- Implants in Aesthetic Zone
- Composite & Restorative
- Team Building
- Photography
- Case Acceptance



Dr. Joyce Bassett
DDS, FAACD, FAGD

FAST-PACED

CONTENT-FILLED

PASSIONATE

Honors & Achievements

American Academy of Cosmetic Dentistry
Accredited Fellow and President
Evy Award for Excellence in Teaching
Former President 2015-2016

American Board of Aesthetic Dentistry
Diplomate

American Academy of Esthetic Dentistry
Associate Member

Academy of General Dentistry
Fellow

Academy of Fixed Prosthodontics
Member

Arizona CASS Dental Clinic
Volunteer Dentist of the Year Award

Benco Dental
Lucy Hobbs Award for Clinical Expertise

Give Back a Smile
Smile Volunteer Service Award

KOIS Center
Clinical Instructor



THESE DOCTORS ARE AMONG
**THE TOP
 DOCTORS
 IN AMERICA**

Bio

Dr. Joyce Bassett

Dr. Joyce Bassett practices comprehensive restorative and aesthetic dentistry in Scottsdale, Arizona. She is an accredited fellow of the American Academy of Cosmetic Dentistry and former president, 2015-2016. She is a diplomate of the American Board of Aesthetic Dentistry, an associate member of the American Academy of Esthetic Dentistry, a KOIS Center clinical instructor, an active member in the Academy of Fixed Prosthodontics, and a fellow in the AGD. Dr. Bassett has also served as adjunct faculty, teaching the aesthetic continuum at the Arizona School of Dentistry. Dr. Bassett is an international lecturer, published author, and member of the editorial board of several peer-reviewed publications. The cases presented in her lectures are all published in peer-reviewed journals. She is a recipient of the Lucy Hobbs Award for Clinical Expertise, the AACD Evy Award for Excellence in Teaching Cosmetic Dentistry Education, the Volunteer Dentist of the Year Award by Arizona CASS Dental Clinic, and the Give Back a Smile Volunteer Service Award.



COURSES

1. FROM SIMPLE TO COMPLEX:

What's new in Digital Design & Technology, Veneers, Crowns, Implant Restorations, Composite, Occlusion, Treatment Planning, Case Acceptance, Preparation Design, Complex Aesthetic Cases, and More

2. THE COMPLEX AESTHETIC CASE:

When & How to Open the Vertical Dimension
Occlusion, Bite and Function

3. EVERYTHING YOU NEED TO KNOW ABOUT CREATING UNDETECTABLE RESTORATIONS IN COMPOSITE

Latest technology updates to aid you in Mastering Anterior and Posterior Techniques of Direct Composite

4. CERAMICS:

Mastering Preparation Design, Material Selection, and Cementation

5. SECRETS TO CASE ACCEPTANCE AND LONGEVITY

This program is designed for the Dentist and Team.

6. PROFESSIONAL TOOTH WHITENING:

This program is designed for the Dentist and Team.

7. AESTHETICS BUILT TO LAST:

The Synergy of Esthetics and Function in All-Ceramic and Composite Applications

8. CUTTING EDGE TECHNOLOGY WITH DIGITAL DESIGN AND REAL-WORLD COSMETIC DENTISTRY:

Faults, Failures and Fixes -
Things That Go Wrong When You Do Everything Right.



Courses

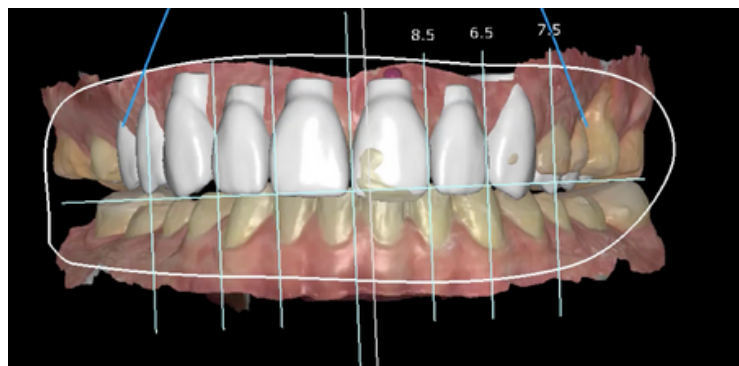
1. From Simple to Complex: What's new in Digital Design and Technology, Veneers, Crowns, Implant Restorations, Composite, Occlusion, Treatment Planning, Case Acceptance, Preparation Design, Complex Aesthetic Cases, and More

Full Day, Half Day or Virtual Learning Lecture

This innovative, fast-paced presentation will explore frequently seen problems that occur during restorative treatment, showcasing a variety of modes of failures. You will learn systematic techniques that can be used to both prevent and remedy these failures. This digitally generated approach will guide the dentist and expedite important design decisions, provide unique patient communication options, and improve the predictability of the aesthetic outcome. You will develop presentation skills and verbiage to instill confidence with your patients, offer realistic patient expectations, and brand you as the go-to dentist. You will leave the course with the whole package necessary to catapult your practice to the top level of aesthetic dentistry. There is something for everyone to learn in this presentation.

Learning Objectives:

- Master the usage of systemized techniques to treat simple to complex cases with veneers, crowns and implants
- Elevate your verbal skills and boost your case acceptance
- Learn how to evaluate the digital mockup in the analog world, chairside, and make corrections to enhance the prototypes before final restorations are created
- Learn how to utilize digital libraries and choose the proper tooth forms that will optimize the illusion of harmony and balance in complex space management cases.



2. The Complex Aesthetic Case: When & How to Open the Vertical

Full Day, Half Day or Virtual Learning Lecture

Failures in dentistry are frequently blamed on materials, but, many times we, the dentist are the culprit. We treat the anterior teeth as cosmetic challenges, and we forget to look at the relationship of form and function. This presentation will simplify occlusion by combining dental facial treatment planning in combination with function. By applying a few basic principles, we can design the proper amount of restorative space for our restorations. This innovative, fast pace course will explore aesthetics that are BUILT TO LAST.

Learning Objectives:

- Learn how to diagnose and treatment plan an aesthetic case
- Evaluate the patient's incisor position and morphology, their dento-facial requirements, determine the appropriate vertical dimension and create synergy between form and function
- Understand distinctive steps to simplify restorative preparations and identify which adhesives and restorative materials work the best for maximum predictability



3. EVERYTHING YOU NEED TO KNOW ABOUT CREATING UNDETECTABLE RESTORATIONS IN COMPOSITE

Latest technology updates to aid you in Mastering Anterior and Posterior Techniques of Direct Composite

Half Day or Virtual Learning Lecture

Lecture with a potential hands-on component depending on manufacturer support

The meeting will need to provide an ELMO Visualizer.

This course is meticulously crafted to update you on the latest technologies, review current concepts and train your eye to see nuances followed by enhanced hand skills. Techniques to create morphologically precise direct anterior and posterior composite restorations will be discussed and demonstrated. You will develop artistic capabilities by training your eyes to see the different dimensions of color, when evaluating an anterior tooth. You will then learn which opacities and thickness to use in each area to be reconstructed and make a fracture line disappear. Learn when and how to use pink composite to mimic gingiva.

Step by step finishing and polishing technique will be shown that predictably will mimic the contralateral tooth's facial anatomy and reflective surfaces. You will restore both a class IV and build a direct composite veneer and create a morphologically precise undetectable restoration.

This class will utilize an easy, fast and practical placement technique with a bulk fill posterior composite. This procedure is based on proven adhesives, advanced composite materials and new technologies. The cases presented have been published in national peer reviewed journals. There is something for everyone to learn in this presentation.

BRING YOUR LOOPS FOR MAGNIFICATION



Learning Objectives:

- Train your eyes to see color, line angles, reflective surface, shape, and form in the adjacent tooth that is being replicated
- Learn how to achieve a predictable composite restoration following the stratification of opacities and achieve undetectable restorations
- Learn how to layer the different opacities of composite, opaquing, tinting, finishing and surface texture to create natural light reflection and make a fracture line disappear
- Review current composite materials, bonding systems, c factors, and techniques necessary to achieve predictable outcomes, while minimizing post operator sensitivity
- Master the techniques of posterior composite placement with bulk fill technology and
- matching techniques



Courses

4. Ceramics: Mastering Preparation Design, Material Selection and Cementation Maximize Aesthetic Results Through Concepts Preparation Design

Half Day or Virtual Learning Lecture

*Lecture with a potential hands-on component depending on manufacturer support
The meeting will need to provide an ELMO Visualizer.*

Do you ever wonder where to remove tooth structure when prepping a difficult case? Is your laboratory team frustrated at times with the preparation design of your case? It is difficult to obtain the final esthetics because we removed too much tooth structure here and not enough there? Do you realize your preps are the guide for the final esthetic? Dr. Bassett will present how to simplify difficult space management cases using incisal and labial reduction prep guides, as published in leading dental publications. These techniques ensure predictable and repeatable results. Each participant will prepare an eight-unit space management case.

BRING YOUR LOOPS FOR MAGNIFICATION



Learning Objectives:

1. Develop the knowledge to confidently manage a difficult space management case
2. Master the concepts of reduction preparation guides and know how and when to use the guides and integrate them with basic preparation design principles
3. Master composite provisional augmentation and then use depth cutters across the facials to facilitate preparation to attain minimal tooth reduction.



5. Secrets to Case Acceptance and Longevity

Team: Hygienist, Dental Assistants, Front Office and Dentist.

Half Day or Virtual Learning Lecture

This program is designed for the entire team and will boost your case acceptance and the longevity of your restorations. Dr. Bassett will cover how to present treatment to your patients and how to assist them in making the proper choices. The patient will understand what life will be like with new restorations, and how to physically maintain them and load them in their chewing cycle. The team will own the same knowledge as the dentist and bridge the gap between the practice's vision and reality.

Learning Objectives:

- How to boost case your acceptance
- How to build a supportive network and elevate your verbal skills
- How to integrate function and maintenance to gain longevity and predictability of your restorations

6. Professional Tooth Whitening... How To Maximize Breakthrough Technology

Team: Hygienist, Dental Assistants, Front Office and Dentist.

Half Day or Virtual Learning Lecture

This presentation focuses on strategies for the integration of high-performance in-office and take-home whitening solutions. Step-by-step instructions will be presented on how to integrate and motivate patients to embrace whitening. The basic science and claims of the latest whitening technology and sensitivity protocol will be reviewed and updated. The objective is to utilize safe and effective whitening options for different patient situations with the goal of creating revenue-building whitening opportunities.

Learning Objectives:

- Learn how to utilize safe and effective whitening options for different patient situations
- Understand the basic science, and claims of the latest whitening technology and sensitivity protocol
- Learn how integrate whitening into your practice and motivate patients to embrace whitening



7. Aesthetics Built to Last: The Synergy of Esthetics and Function in All-Ceramic and Composite Applications

Full Day, Half Day or Virtual Learning Lecture

Failures in dentistry are frequently blamed on materials, but in reality, we as dentists are often the culprit. We treat the anterior teeth as cosmetic challenges, and we forget to look at the relationship of form and function.

In this course, we will simplify occlusion by applying a few basic principles so we can find and create a predictable bite to support the joint and the muscles. Whether we are restoring a single tooth with a composite restoration or a full mouth aesthetic case with porcelain, you will immediately apply what you learn in this course.

Comprehensive restorative treatment planning must include recognition of the patient's incisor position and morphology, dentofacial requirements, and a determination of an appropriate vertical dimension. Additionally, to ensure restoration longevity, functional assessments of bite force management must be made. Envelope development, occlusal guidance, and parafunctional forces must be understood and identified so the final restoration design will predictably accommodate the intra-oral forces.

Without an understanding of the science and symptoms of malocclusion, we as dentists will continue to treat our patients to their existing pathologic conditions. Achieving aesthetically exquisite anterior restorations requires additional knowledge of smile design, material selection, and preparation techniques.

This presentation will explore frequently seen problems that occur during restorative treatment. Clear, reproducible bites and systemized techniques will be presented to treat every aspect of the bite and ensure aesthetics that are BUILT TO LAST.

Learning Objectives:

- Learn a step-by-step approach to determining the most appropriate occlusal scheme based upon the amount of anterior guidance needed, choosing the proper VDO, determining when to use MIP versus CR, and when to equilibrate
- Identify signs and symptoms related to occlusal instability and communicate diagnosis and treatment options to the patient
- Integrate sound occlusal principles and force management in your cases and create synergy between form and function



8. Cutting Edge Technology with Digital Design and Real World Cosmetic Dentistry: Faults, Failures, and Fixes

Full Day Lecture

Failures in dentistry are frequently blamed on materials, but in reality, operator error is often the culprit. This innovative and fast-paced course will focus on aesthetics that are built to last. Clear, concise, and systemized techniques will be presented to treat every aspect from simple to complex cases involving veneers, crowns, and implant restorations. These protocols will increase profitability by preventing failures that occur day-to-day in your office.

Cutting edge preparation techniques that will simplify difficult space management cases will be presented, along with tips for how to handle shade challenges and determine when preparation modifications may be necessary. You will understand how to integrate flowable composite on the provisional and communicate the final patient-approved shapes. State-of-the-art digital smile design will link 3D prosthetic planning with fundamental principles and real-time communication that decreases dentist chair time and ceramist re-work.

Dr. Bassett will show you how to turn a complicated camera into a point-and-shoot device so your team can master digital photography. A clinical update on adhesive technology and ceramics will be presented so the team knows what systems to use and understands their limitations along with the specific verbiage that helps control patient expectations. She will clear the confusion regarding products and techniques ranging from incremental layering to bulk fill technology in the posterior. Dimensions of color and anatomic stratification of anterior composite to attain a polychromatic imperceptible result will be shown.

The relationship of form and function precludes treating anterior teeth as cosmetic challenges alone. Aesthetic and functional parameters of incisor position and morphology, dental facial treatment planning, determination of vertical dimension, and bite force management will be presented as components that allow comprehensive restorative treatment. Occlusal guidance must be understood so the final designs of the restoration can accommodate the intra-oral forces, assuring longevity and predictability of the prosthesis.

The cases presented have been published in national peer-reviewed journals. There is something for everyone to learn! You will leave the course with a proven step-by-step approach from simple to difficult clinical situations.

Learning Objectives:

- Integrate sound occlusal principles to create synergy between form and function
- Own the knowledge and ability to confidently prepare a difficult space management case
- Identify which adhesives and restorative materials work the best for maximum
- predictability and learn matricing techniques and bulk fill technology for mastering posterior composites
- Learn how to achieve a predictable anterior composite restoration following the stratification of opacities to achieve lifelike, undetectable restorations

CONTACT

TO SCHEDULE:

LAUREL HOBERG

laurel.hoberg@rarebirdspeakers.com

630.303.0247

CLICK HERE



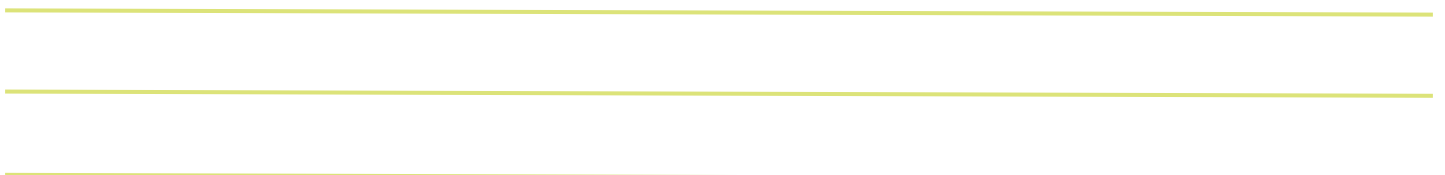
JOYCE BASSETT

speakers website

www.smilesbyjoyce.com

drmouthy@aol.com

602.989.5552



AV REQUIREMENTS 2024

Presentation Format

Widescreen 3 x 1 Format

LCD Projector

8000-10000 lumen projector DLP High Definition - projector is the most important 1920 x 1080 is the projection needed

Screen

First Choice: 8 x 24 screen

Second Choice: 16 x 9 screen if 8 x 24 is not possible

Microphone

Wireless lavalier microphone

Sound Patch (Audio Package)

Sound Patch needed for Computer

Appropriate for the audience size-I have movies that need volume

Laptop Used

MAC I have the DVI connector

PODIUM

When looking at the screen would be to the left of the screen

My main concern is color. My images of teeth, gums and facial skin tones must look real.

If your meeting is requesting a workshop/hands on program, you must rent or purchase an ELMO Visualizer for the course.